

SIP-HV1A05-HR

High Voltage Reed Relay

PRODUCT VISUAL

Order Information

SIP-HV1A05-HR

no exact product photo found use source order marking and pdf diagrams

KEY RATINGS

COIL VOLTAGE

5 VDC

CONTACT FORM

1 Form A

SWITCH VOLTAGE

1 kVAC / 1.5 kVDC

CONTACT RATING

100 W

OVERVIEW

- High voltage reed relay
- Breakdown up to 3 kVDC
- Custom design available
- Low contact resistance
- Excellent lifetime characteristics

COIL DATA

Nominal Coil Voltage	5 VDC
Max Operating Voltage	15 VDC
Max Pull-in Voltage	3.75 VDC
Min Drop-out Voltage	0.5 VDC
Coil Resistance	500 Ω

CONTACT RATINGS

Contact Form	1 Form A
Max Contact Rating	100 W
Max Switch Voltage	1 kVAC / 1.5 kVDC
Max Switch Current	1.0 A
Max Carrying Current	2.5 A
Min Breakdown Voltage	3 kVDC
Max Contact Resistance	150 mΩ

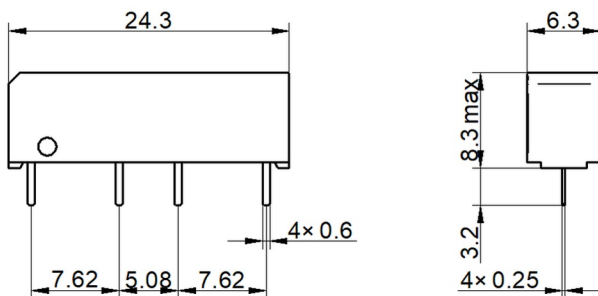
ELECTRICAL CHARACTERISTICS

Dielectric Strength Coil/Contact	3 kVDC
Insulation Resistance Coil/Contact	1.00E+12 Ω
Operate Time incl. Bounce	1.0 ms
Reset Time	0.25 ms
Capacitance Across Contacts	1.0 pF

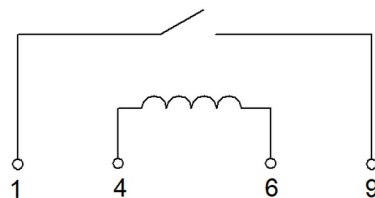
ENVIRONMENTAL / OPTIONS

Operating Temperature	-40°C to +85°C
Storage Temperature	-40°C to +105°C
Soldering Temperature	260°C, 5 sec max

MECHANICAL OUTLINE / DIMENSIONS



CIRCUIT / MARKING / TERMINAL VIEW



ORDERING & SOURCE TRACEABILITY

SIP-HV1A05-HR — SIP-HV, 1A = 1 Form A, 05 = 5 VDC, HR = high-resistance variant

Source: SIP-HV1A05-HR.pdf

Technical values are preserved from source PDFs / generated metadata. Original outline and circuit figures are reused where available; do not treat artwork proportions as standalone dimensional authority.