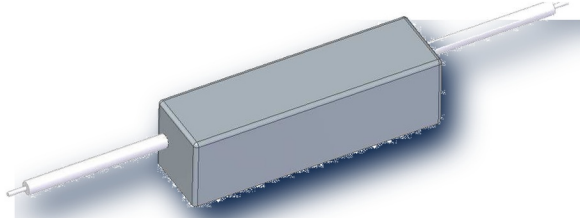


HVR24-1A18-P00

High Voltage Reed Relay

PRODUCT VISUAL



embedded pdf product render unmarked plus exact hvr24 1a18 p00 marking in outline

KEY RATINGS

COIL VOLTAGE
24 VDC

CONTACT FORM
1 Form A

SWITCH VOLTAGE
10 kV ACpeak/DC

BREAKDOWN
18 kVDC

OVERVIEW

- High voltage reed relay
- Breakdown up to 18 kVDC
- Custom design available
- Low contact resistance
- Excellent lifetime characteristics

COIL DATA

Nominal Coil Voltage	24 VDC
Max Operating Voltage	29 VDC
Max Pull-in Voltage	18 VDC
Min Drop-out Voltage	2 VDC
Coil Resistance	600 Ω

CONTACT RATINGS

Contact Form	1 Form A
Max Contact Rating	50 W
Max Switch Voltage	10 kV ACpeak/DC
Max Switch Current	3.0 A
Max Carrying Current	5.0 A
Min Breakdown Voltage	18 kVDC
Max Contact Resistance	250 mΩ

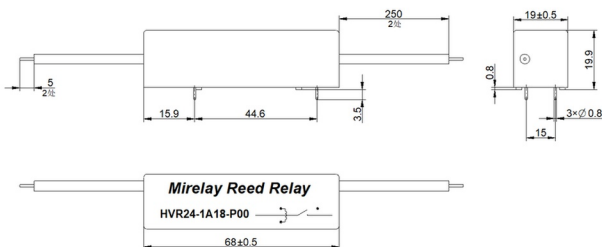
ELECTRICAL CHARACTERISTICS

Dielectric Coil/Contact	18 kVDC
Insulation Coil/Contact	1.00E+12 Ω
Operate Time incl. Bounce	3.0 ms
Reset Time	1.5 ms
Capacitance Across Contacts	0.8 pF

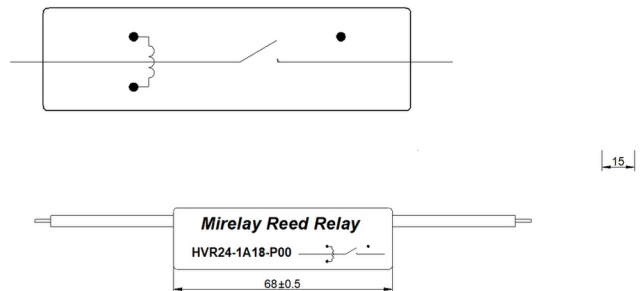
ENVIRONMENTAL / OPTIONS

Operating Temperature	-20°C to +70°C
Storage Temperature	-35°C to +105°C
Soldering Temperature	260°C, 5 sec max

MECHANICAL OUTLINE / DIMENSIONS



CIRCUIT / MARKING / TERMINAL VIEW



ORDERING & SOURCE TRACEABILITY

HVR24-1A18-P00 — HVR, 24 = 24 VDC, 1A = 1 Form A, 18 = 18 kVDC, suffix = P00

Source: HVR24-1A18-P00.pdf

Technical values are preserved from source PDFs / generated metadata. Original outline and circuit figures are reused where available; do not treat artwork proportions as standalone dimensional authority.