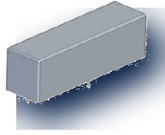


# HVR24-1A10-06-P1

## High Voltage Reed Relay

### PRODUCT VISUAL



embedded pdf unmarked 3d render; exact HVR24-1A10-06-P1 marking verified in outline/markin

### KEY RATINGS

COIL VOLTAGE

**24 VDC**

CONTACT FORM

**1 Form A**

SWITCH VOLTAGE

**1 kV ACpeak/DC**

CONTACT RATING

**100 W**

### OVERVIEW

- High voltage reed relay
- Breakdown up to 10 kV
- Custom design available
- Low contact resistance
- Excellent lifetime characteristics

### COIL DATA

Nominal Coil Voltage	<b>24 VDC</b>
Max Operating Voltage	<b>29 VDC</b>
Max Pull-in Voltage	<b>18 VDC</b>
Min Drop-out Voltage	<b>2 VDC</b>
Coil Resistance	<b>600 Ω</b>

### CONTACT RATINGS

Contact Form	<b>1 Form A</b>
Max Contact Rating	<b>100 W</b>
Max Switch Voltage	<b>1 kV ACpeak/DC</b>
Max Switch Current	<b>1.0 A</b>
Max Carrying Current	<b>2.5 A</b>
Min Breakdown Voltage	<b>10 kVDC</b>
Max Contact Resistance	<b>200 mΩ</b>

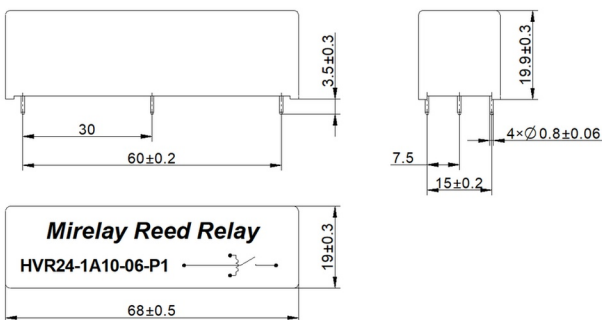
### ELECTRICAL CHARACTERISTICS

Dielectric Strength Coil/Contact	<b>15 kVDC</b>
Insulation Resistance Coil/Contact	<b>1.00E+12 Ω</b>
Operate Time incl. Bounce	<b>1.0 ms</b>
Reset Time	<b>0.2 ms</b>
Capacitance Across Contacts	<b>0.4 pF</b>

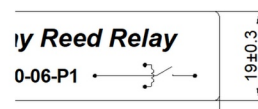
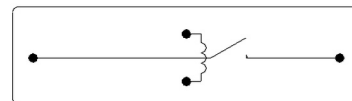
### ENVIRONMENTAL / OPTIONS

Operating Temperature	<b>-20°C to +70°C</b>
Storage Temperature	<b>-35°C to +105°C</b>
Soldering Temperature	<b>260°C, 5 sec max</b>
Vibration / Shock	<b>Not specified in source</b>
Washability	<b>Not specified in source</b>

### MECHANICAL OUTLINE / DIMENSIONS



### CIRCUIT / MARKING / TERMINAL VIEW



### ORDERING & SOURCE TRACEABILITY

**HVR24-1A10-06-P1 — HVR, 24 = 24 VDC, 1A = 1 Form A, 10 = 10 kVDC, Pin Out = 06, Special = P1**

Source: HVR24-1A10-06-P1.pdf

Technical values are preserved from source PDFs / generated metadata. Original outline and circuit figures are reused where available; do not treat artwork proportions as standalone dimensional authority.