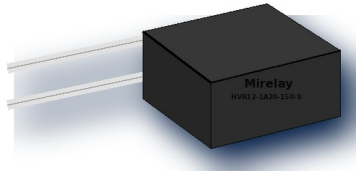


HVR12-1A20-150-S

High Voltage Reed Relay

PRODUCT VISUAL



deterministic corrected product render due source hvr24 marking mismatch

KEY RATINGS

COIL VOLTAGE
12 VDC

CONTACT FORM
1 Form A

SWITCH VOLTAGE
10 kVDC

CONTACT RATING
50 W

OVERVIEW

- High voltage reed relay
- Breakdown up to 20 kVDC
- Custom design available
- Shielded layout with G terminal
- Excellent lifetime characteristics

COIL DATA

Nominal Coil Voltage	12 VDC
Nominal Current	80 mA
Coil Resistance	150 ± 10% Ω
Max Pull-in Voltage	9 VDC
Min Drop-out Voltage	1 VDC

CONTACT RATINGS

Contact Form	1 Form A
Max Contact Rating	50 W
Max Switch Voltage	10 kVDC
Max Switch Current	3.0 A
Max Carrying Current	5.0 A
Min Breakdown Voltage	20 kVDC
Max Contact Resistance	200 mΩ
Life Expectancy	5 × 10⁷ ops @ 500V 100mA

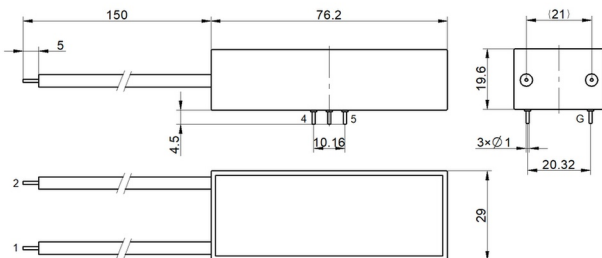
ELECTRICAL CHARACTERISTICS

Dielectric Open / Contact-Coil	20 / 20 kVDC
Insulation Open / Contact-Coil	1 × 10¹² Ω each
Operate Time incl. Bounce	3.5 ms
Reset Time	2.0 ms
Capacitance	1.0 pF across open switch

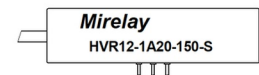
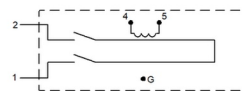
ENVIRONMENTAL / OPTIONS

Vibration	20 G, 10-2KHz 1.5mm
Shock	50 G, 11ms half-sine
Operating Temperature	-20°C to +70°C
Storage Temperature	-35°C to +105°C
Soldering Temperature	260°C, 5 sec max
Washability	Fully sealed

MECHANICAL OUTLINE / DIMENSIONS



CIRCUIT / MARKING / TERMINAL VIEW



ORDERING & SOURCE TRACEABILITY

HVR12-1A20-150-S — HVR, 12 = 12 VDC, 1A = 1 Form A, 20 = 20 kVDC, Pin Out = 150, Special = S

Source: HVR12-1A20-150-S.pdf

Technical values are preserved from source PDFs / generated metadata. Original outline and circuit figures are reused where available; do not treat artwork proportions as standalone dimensional authority.