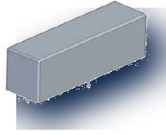


HVR12-1A10-06-P1

High Voltage Reed Relay

PRODUCT VISUAL



embedded pdf unmarked 3d render; exact HVR12-1A10-06-P1 marking verified in outline/markin

KEY RATINGS

COIL VOLTAGE
12 VDC

CONTACT FORM
1 Form A

SWITCH VOLTAGE
1 kV AC/DC

CONTACT RATING
100 W

OVERVIEW

- High voltage reed relay
- Breakdown up to 10 kV
- Custom design available
- Low contact resistance
- Excellent lifetime characteristics

COIL DATA

| | |
|-----------------------|---------------|
| Nominal Coil Voltage | 12 VDC |
| Max Operating Voltage | 16 VDC |
| Max Pull-in Voltage | 9 VDC |
| Min Drop-out Voltage | 1 VDC |
| Coil Resistance | 200 Ω |

CONTACT RATINGS

| | |
|------------------------|-----------------------|
| Contact Form | 1 Form A |
| Max Contact Rating | 100 W |
| Max Switch Voltage | 1 kV ACpeak/DC |
| Max Switch Current | 1.0 A |
| Max Carrying Current | 2.5 A |
| Min Breakdown Voltage | 10 kVDC |
| Max Contact Resistance | 200 mΩ |

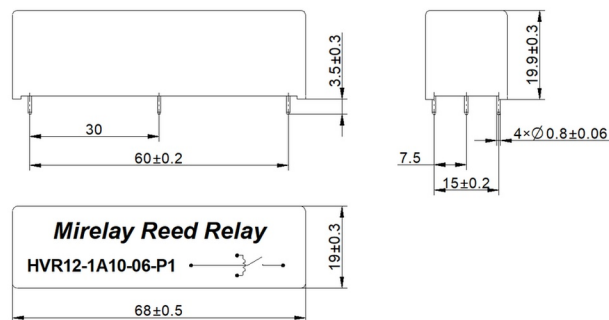
ELECTRICAL CHARACTERISTICS

| | |
|-----------------------------|-------------------|
| Dielectric Coil/Contact | 15 kVDC |
| Insulation Coil/Contact | 1.00E+12 Ω |
| Operate Time incl. Bounce | 1.0 ms |
| Reset Time | 0.2 ms |
| Capacitance Across Contacts | 0.4 pF |

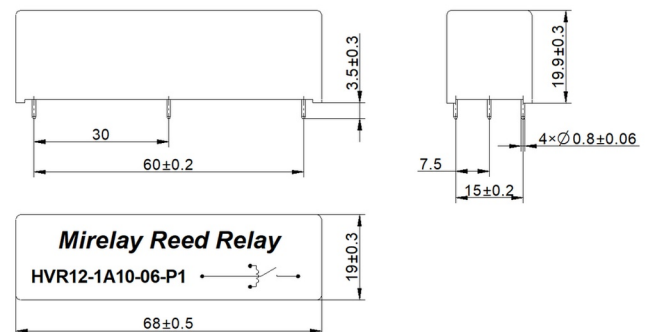
ENVIRONMENTAL / OPTIONS

| | |
|-----------------------|--------------------------------|
| Operating Temperature | -20°C to +70°C |
| Storage Temperature | -35°C to +105°C |
| Soldering Temperature | 260°C, 5 sec max |
| Vibration / Shock | Not specified in source |
| Washability | Not specified in source |

MECHANICAL OUTLINE / DIMENSIONS



CIRCUIT / MARKING / TERMINAL VIEW



ORDERING & SOURCE TRACEABILITY

HVR12-1A10-06-P1 — HVR, 12 = 12 VDC, 1A = 1 Form A, 10 = 10 kVDC, Pin Out = 06, Special = P1

Source: HVR12-1A10-06-P1.pdf

Technical values are preserved from source PDFs / generated metadata. Original outline and circuit figures are reused where available; do not treat artwork proportions as standalone dimensional authority.