

## HRM12-1A10

### High Voltage Reed Relay Module

#### PRODUCT VISUAL



real hrm family product image from project library

#### KEY RATINGS

COIL VOLTAGE  
**12 VDC**

CONTACT FORM  
**1 Form A**

CHANNELS  
**1**

SWITCH VOLTAGE  
**7 kV**

BREAKDOWN  
**10 kVDC**

CONTACT RATING  
**10 W**

#### OVERVIEW

- Multi-channel high-voltage reed relay module
- DIN rail / cabinet integration friendly
- Custom configuration support
- Key ratings: 12 VDC 1 Form A 1 7 kV 10 kVDC 10 W
- Source-PDF outline and wiring retained

#### COIL DATA

Nominal	12 VDC
Pickup	9 VDC max
Dropout	1 VDC min
Max voltage	15 VDC
Resistance	200 Ω

#### CONTACT RATINGS

Contact Form	1 Form A
Channels	1
Contact Rating	10 W
Max Switching Voltage	7 kV
Max Switching Current	3.5 A
Max Carry Current	5.0 A
Contact Resistance	150 mΩ
Breakdown Voltage	10 kVDC

#### ELECTRICAL CHARACTERISTICS

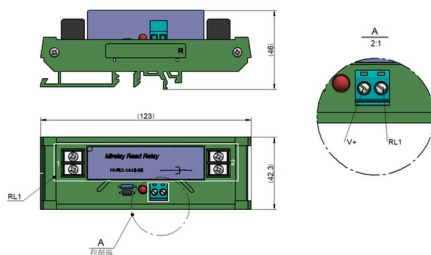
Contact-to-Coil Dielectric	15 kVDC
Insulation Resistance	1×10 <sup>12</sup> Ω
Operate Time	3.0 ms
Release Time	1.5 ms

#### ENVIRONMENTAL / OPTIONS

Operating Temperature	-20°C to +70°C
Storage Temperature	-35°C to +105°C

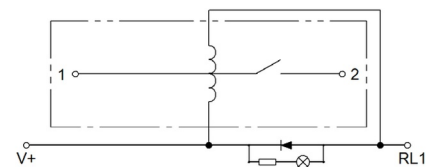
#### MECHANICAL OUTLINE / DIMENSIONS

Source outline / terminal view



#### CIRCUIT / MARKING / TERMINAL VIEW

Source wiring diagram



#### ORDERING & SOURCE TRACEABILITY

##### HRM12-1A10 — High Voltage Reed Relay Module

Source: HRM(1A) series high voltage Reed Relay Module Sample V2.0.pdf

Technical values are preserved from source PDFs / generated metadata. Original outline and circuit figures are reused where available; do not treat artwork proportions as standalone dimensional authority.