

HRM05-1A15 High Voltage Reed Relay Module

PRODUCT VISUAL



real hrm family product image from project library

KEY RATINGS

COIL VOLTAGE

5 VDC

CONTACT FORM

1 Form A

CHANNELS

1

SWITCH VOLTAGE

10 kV

BREAKDOWN

15 kVDC

CONTACT RATING

10 W

OVERVIEW

- Multi-channel high-voltage reed relay module
- DIN rail / cabinet integration friendly
- Custom configuration support
- Key ratings: 5 VDC 1 Form A 1 10 kV 15 kVDC 10 W
- Source-PDF outline and wiring retained

COIL DATA

Nominal	5 VDC
Pickup	4 VDC max
Dropout	0.5 VDC min
Max voltage	6.5 VDC
Resistance	50 Ω

CONTACT RATINGS

Contact Form	1 Form A
Channels	1
Contact Rating	10 W
Max Switching Voltage	10 kV
Max Switching Current	3.5 A
Max Carry Current	5.0 A
Contact Resistance	150 mΩ
Breakdown Voltage	15 kVDC

ELECTRICAL CHARACTERISTICS

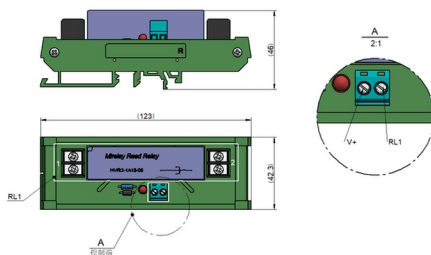
Contact-to-Coil Dielectric	15 kVDC
Insulation Resistance	1×10¹² Ω
Operate Time	3.0 ms
Release Time	1.5 ms

ENVIRONMENTAL / OPTIONS

Operating Temperature	-20°C to +70°C
Storage Temperature	-35°C to +105°C

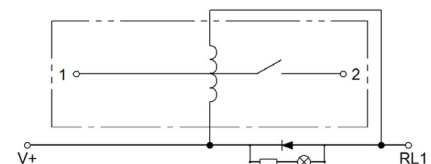
MECHANICAL OUTLINE / DIMENSIONS

Source outline / terminal view



CIRCUIT / MARKING / TERMINAL VIEW

Source wiring diagram



ORDERING & SOURCE TRACEABILITY

HRM05-1A15 — High Voltage Reed Relay Module

Source: HRM(1A) series high voltage Reed Relay Module Sample V2.0.pdf

Technical values are preserved from source PDFs / generated metadata. Original outline and circuit figures are reused where available; do not treat artwork proportions as standalone dimensional authority.