

HRM05-1A10 High Voltage Reed Relay Module

PRODUCT VISUAL



real hrm family product image from project library

KEY RATINGS

COIL VOLTAGE

5 VDC

CONTACT FORM

1 Form A

CHANNELS

1

SWITCH VOLTAGE

7 kV

BREAKDOWN

10 kVDC

CONTACT RATING

10 W

OVERVIEW

- Multi-channel high-voltage reed relay module
- DIN rail / cabinet integration friendly
- Custom configuration support
- Key ratings: 5 VDC 1 Form A 1 7 kV 10 kVDC 10 W
- Source-PDF outline and wiring retained

COIL DATA

| | |
|-------------|--------------------|
| Nominal | 5 VDC |
| Pickup | 4 VDC max |
| Dropout | 0.5 VDC min |
| Max voltage | 6.5 VDC |
| Resistance | 50 Ω |

CONTACT RATINGS

| | |
|-----------------------|-----------------|
| Contact Form | 1 Form A |
| Channels | 1 |
| Contact Rating | 10 W |
| Max Switching Voltage | 7 kV |
| Max Switching Current | 3.5 A |
| Max Carry Current | 5.0 A |
| Contact Resistance | 150 mΩ |
| Breakdown Voltage | 10 kVDC |

ELECTRICAL CHARACTERISTICS

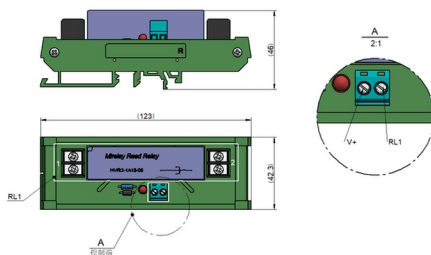
| | |
|----------------------------|----------------------------|
| Contact-to-Coil Dielectric | 15 kVDC |
| Insulation Resistance | 1×10¹² Ω |
| Operate Time | 3.0 ms |
| Release Time | 1.5 ms |

ENVIRONMENTAL / OPTIONS

| | |
|-----------------------|------------------------|
| Operating Temperature | -20°C to +70°C |
| Storage Temperature | -35°C to +105°C |

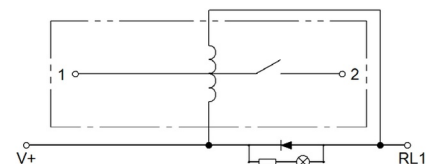
MECHANICAL OUTLINE / DIMENSIONS

Source outline / terminal view



CIRCUIT / MARKING / TERMINAL VIEW

Source wiring diagram



ORDERING & SOURCE TRACEABILITY

HRM05-1A10 — High Voltage Reed Relay Module

Source: HRM(1A) series high voltage Reed Relay Module Sample V2.0.pdf

Technical values are preserved from source PDFs / generated metadata. Original outline and circuit figures are reused where available; do not treat artwork proportions as standalone dimensional authority.