

DIL-1A05H High Voltage Reed Relay

PRODUCT VISUAL

SOURCE IMAGE NOT AVAILABLE

generated fallback

KEY RATINGS

NOMINAL COIL VOLTAGE

5 VDC

MAX OPERATING VOLTAGE

15 VDC

MAX PULL-IN VOLTAGE

3.75 VDC

MIN DROP-OUT VOLTAGE

0.6 VDC

CONTACT FORM

1 Form A

MAX CONTACT RATING

10 W

OVERVIEW

- High Voltage Reed Relay
- Hermetically sealed for long life
- Low Contact Resistance
- Custom Design Available

COIL DATA

Nominal Coil Voltage	5 VDC
Max Operating Voltage	15 VDC
Max Pull-in Voltage	3.75 VDC
Min Drop-out Voltage	0.6 VDC
Coil Resistance	500 ohm

CONTACT RATINGS

Contact Form	1 Form A
Max Contact Rating	10 W
Max Switch Voltage	265 Vac / 300 Vdc
Max Switch Current	0.3 Aac / 0.5 Adc
Max Carrying Current	1.2 Adc
Min Breakdown Voltage	450 VDC
Max Contact Resistance	150 mOhm
Capacitance Across Contacts	0.2 pF

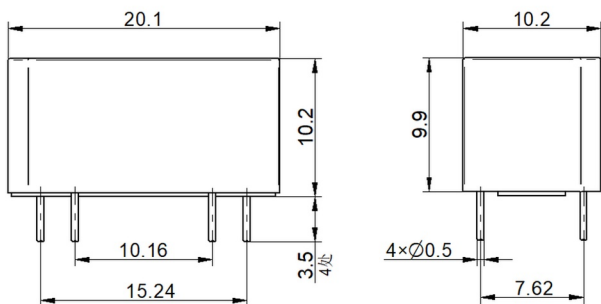
ELECTRICAL CHARACTERISTICS

Operate Time incl. Bounce	0.6 ms
Reset Time	0.2 ms
Dielectric Strength Coil/Contact	4 kVDC
Insulation Resistance Coil/Contact	1.00E+10 ohm

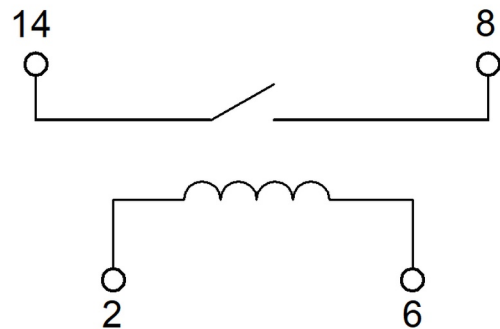
ENVIRONMENTAL / OPTIONS

Operating Temperature	-20 °C to +85 °C
Storage Temperature	-40 °C to +105 °C
Soldering Temperature	260 °C max, 5 sec.

MECHANICAL OUTLINE / DIMENSIONS



CIRCUIT / MARKING / TERMINAL VIEW



ORDERING & SOURCE TRACEABILITY

DIL-1A05H — High Voltage Reed Relay

Source: DIL-1A05H.pdf

Technical values are preserved from source PDFs / generated metadata. Original outline and circuit figures are reused where available; do not treat artwork proportions as standalone dimensional authority.