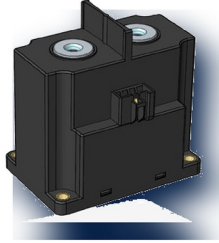


## ESM-150 High Voltage DC Contactor

### PRODUCT VISUAL



real source image

### KEY RATINGS

RATED LOAD

**150 A**

MAX SWITCHING

**1500 VDC**

CONTACT FORM

**1 Form A**

OUTLET

**Internal Thread**

### OVERVIEW

- ✓ Ceramic brazing seal; no arc leakage
- ✓ Hydrogen gas protects contacts
- ✓ Low-noise compact structure
- ✓ 250A at 85°C long-time carrying capacity

### COIL DATA

12V DC	±20%Us; pickup 9.6Vmax; dropout...
24V DC	±20%Us; pickup 19Vmax; dropout...
10-32V DC	±10%Us; pickup 9Vmax; dropout 4Vmin
36-66V DC	±10%Us; pickup 32Vmax; dropout...
Coil Power	Switch on 50/34/42W; hold 5/3W

### CONTACT RATINGS

Contact Form	<b>1 Form A</b>
Contact Rated Load	<b>150 A</b>
Max Switching Voltage	<b>1500 VDC</b>
Max Breaking Current	<b>2000A @1000V, 1 time</b>
Current Tolerance	<b>300A/10m; 500A/30s; 1500A/15s</b>
Contact Resistance	<b>&lt;10 mOhm</b>
Mechanical Durability	<b>3×10<sup>5</sup> ops</b>

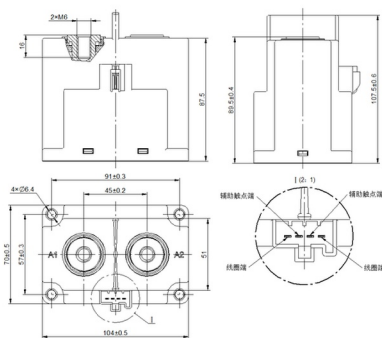
### ELECTRICAL CHARACTERISTICS

Operating Time	≤40 ms
Release Time	≤15 ms
Insulation Resistance	1000 MOhm @1500VDC
Dielectric Open Contacts	4000VAC 50/60Hz
Dielectric Contact/Coil	4000VAC 50/60Hz
Electrical Endurance	150A 1500VDC: 2.5×10 <sup>3</sup> ops

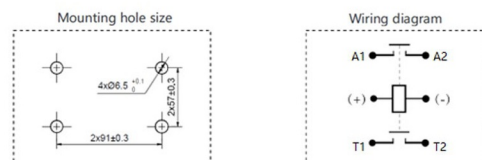
### ENVIRONMENTAL / OPTIONS

Operating Temperature	-40°C to +85°C
Humidity	5%-85% RH
Impact Stability / Strength	196 / 490 m/s <sup>2</sup>
Vibration	10-500Hz, 49 m/s <sup>2</sup>
Weight	1080 g
Auxiliary Contact	NO, on demand
Aux Rated Load	2A/30VDC; 3A/125VAC

### MECHANICAL OUTLINE / DIMENSIONS



### CIRCUIT / MARKING / TERMINAL VIEW



### ORDERING & SOURCE TRACEABILITY

ESM-150A/1500-12-F4 — 150A, 1500VDC, 12VDC coil, NO auxiliary, internal thread

Source: High Voltage DC Contactor ESM-150 Series.pdf

Technical values are preserved from source PDFs / generated metadata. Original outline and circuit figures are reused where available; do not treat artwork proportions as standalone dimensional authority.