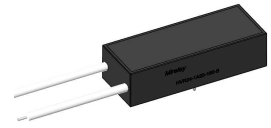


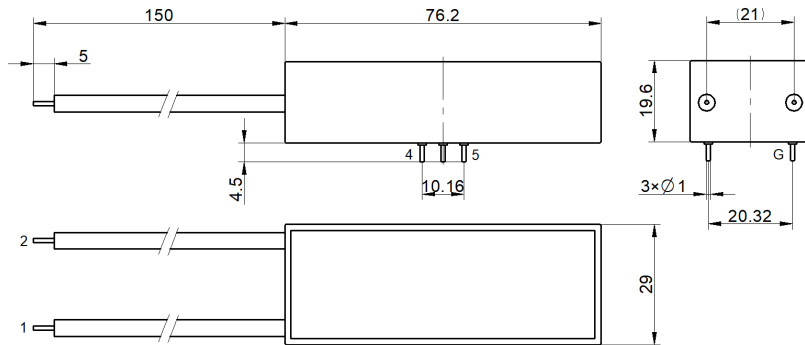
### HVR24-1A20-150-S

- High Voltage Reed Relay
- Low Contact Resistance
- Breakdown up to 20 kVDC
- Excellent Lifetime Characteristics
- Custom Design Available

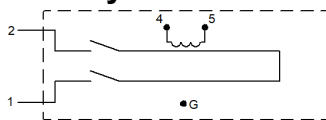


#### Outline Dimension

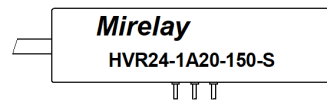
Unit: mm DIM Tolerance: ±0.3



#### Layout [Top View]



#### Marking



#### Coil Parameters (at 20°C)

Nominal Coil Voltage	Nominal Current	Coil Resistance	Max Pull-in Voltage	Min Drop-out Voltage
24 VDC	53mA	450±10% Ω	18 VDC	2 VDC

#### Contact Parameters

Contact Form	1 Form A	Max Contact Rating	50 W
Max Switch Voltage	10 kVDC	Max Switch Current	3.0 A
Max Carrying Current	5.0 A	Min Breakdown Voltage	20 kVDC
Max Contact Resistance	200 mΩ	Life Expectancy (Electrical) (at 500 VDC 100mA)	5×10 <sup>7</sup> ops

#### Electrical Specifications

Dielectric Strength (Static,min)	Open contacts	20 kVDC	Insulation Resistance (min./typ.) Rh<45%, 100V Test Voltage	Open contacts	1×10 <sup>12</sup> Ω
	Contact to coil	20 kVDC		Contact to coil	1×10 <sup>12</sup> Ω
Operate Time,incl.Bounce	3.5 ms	Capacitance	Across Open Switch	1.0 pF	
Reset Time	2.0 ms				

#### Environmental data

Vibration (10 to 2KHz 1.5mm )	20 G	Shock (1/2 sine wave duration 11ms )	50 G
Operating Temperature	-20°C ~ 70°C	Storage Temperature	-35°C ~ 105°C
Soldering Temperature (5 sec. dwell)	260°C	Washability	fully sealed

#### Example of order marking

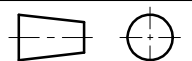
Product model	Nominal Coil Voltage	Contact form	Breakdown Voltage	Pin Out	Special code
HVR	24: 24 VDC	1A: 1 Form A	20: 20 kVDC	150	S

Remark:

**RoHS**

Make	Li Linmao
Checke	Hu Shu
Approved	Dong Hu
Date	30th,Dec,2024

TITLE  
High Voltage Reed Relay  
P/N  
HVR24-1A20-150-S



Version: 04  
Page: 1/1