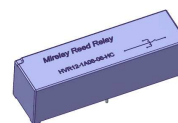
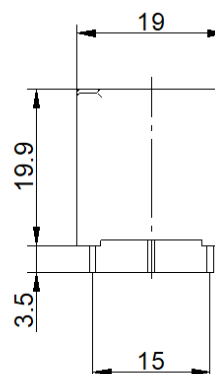
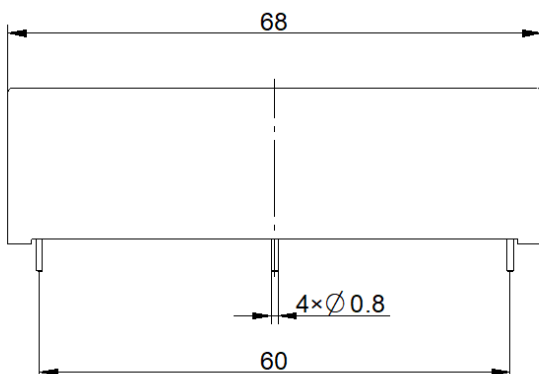


HVR12-1A08-06-HC

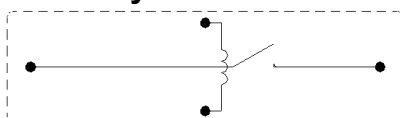
- High Voltage Reed Relay
- Suitable for high current loads
- Breakdown up to 8 kVDC
- Excellent Lifetime Characteristics
- Extended operations in extreme environments



Outline Dimension

 Unit: mm DIM Tolerance: ± 0.3


Layout[Top View]



Marking

Mirelay Reed Relay

HVR12-1A08-06-HC



Coil Parameters (at 20°C)

Nominal Coil Voltage	Nominal Current	Coil Resistance	Max Pull-in Voltage	Min Drop-out Voltage
12 VDC	60 mA	200 \pm 10% Ω	9 VDC	1 VDC

Contact Parameters

Contact Form	1 Form A	Max Contact Rating	200 W
Max Switch Voltage	7 kVDC	Max Switch Current	3.0 A
Max Carrying Current	5.7 A	Min Breakdown Voltage	8 kVDC
Max Contact Resistance	200 m Ω	Life Expectancy (Electrical) (at 500 VDC 100mA)	5 \times 10 ⁷ ops

Electrical Specifications

Dielectric Strength (Static,min)	Open contacts	8 kVDC	Insulation Resistance (min./typ.) Rh<45%, 100V Test Voltage	Open contacts	1 \times 10 ¹² Ω
	Contact to coil	15 kVDC		Contact to coil	1 \times 10 ¹² Ω
Operate Time,incl.Bounce	3.0 ms	Capacitance	Across Open Switch	0.8 pF	
Reset Time	1.5 ms				

Environmental data

Vibration (10 to 2KHz 1.5mm)	20 G	Shock (1/2 sine wave duration 11ms)	50 G
Operating Temperature	-20°C ~ 70°C	Storage Temperature	-35°C ~ 105°C
Soldering Temperature (5 sec. dwell)	260°C	Washability	fully sealed

Example of order marking

Product model	Nominal Coil Voltage	Contact form	Breakdown Voltage	Pin Out	Special code
HVR	12: 12 VDC	1A: 1 Form A	08: 8 kVDC	06	HC

Remark:

RoHS

Make

Li Linmao

Checke

Hu Shu

Approved

Dong Hu

Date

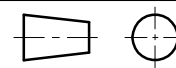
30th,Dec,2024

TITLE

High Voltage Reed Relay

P/N

HVR12-1A08-06-HC



Version: 04

Page: 1/1