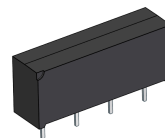


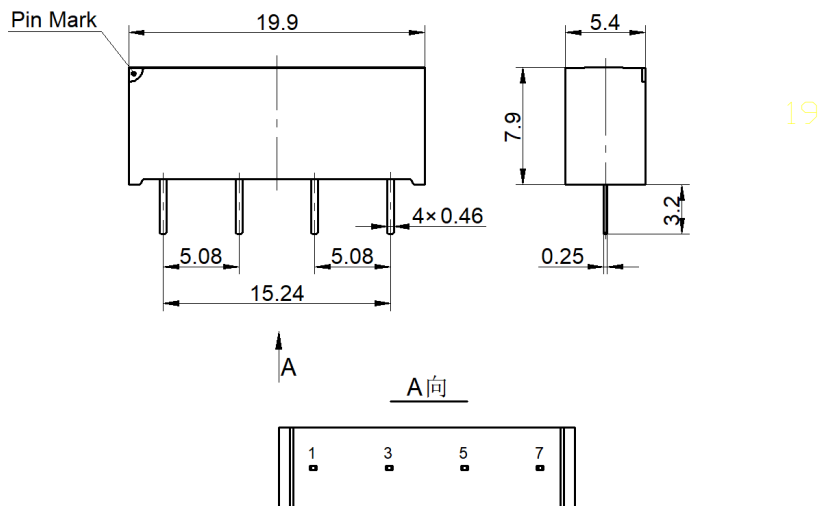
SIP-1A05-ATE

- Hermetically sealed for long life
- Low Contact Resistance
- Excellent Lifetime Characteristics
- Design for ATE applicatiin



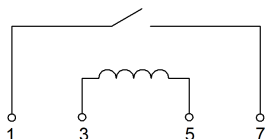
[Outline Dimension]

Unit: mm Scale: 1/1



[Pin Layout]

[Wiring diagram]



Order Information

SIP-1A05-ATE

Coil Parameters		Relay Parameters	
1 Nominal coil voltage	5V DC	1 Min Breakdown Voltage	250V DC
2 Max Operating voltage	15V DC	2 Dielectric Strength coil/contact	1.4KV DC
3 Max Pull-in voltage	3.75V DC	3 Insulation Resistance coil/contact	1.00E+10ohm
4 Min Drop-out voltage	0.5V DC	4 Operate Time, incl. Bounce	0.3ms
5 Coil Resistance	500 ohm	5 Reset Time	0.3ms
Contact Parameters		6 Capacitance Across Contacts	0.4pF
1 Contact Form	1 Form A	7 Storage Temperature	-35~+105°C
2 Max Contact Rating	10 W	8 Operating Temperature	-20~+70°C
3 Max Switch Voltage	200V ACpeak/DC	9 Soldering Temperature	5 sec. max 260°C
4 Max Switch Current	0.5 A		
5 Max Carrying Current	1.0 A		
6 Min Breakdown Voltage	250V DC		
7 Max Contact Resistance	100 mohm		

Version: 01	Designed by		TITLE	
	Checked by		High Voltage Reed Relay	
	Approved by		P/N	Scale: 1:1
	Date	29th, Aug, 2022	SIP-1A05-ATE	Page: 1/1