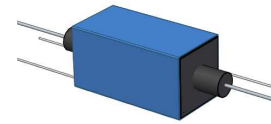


MH12-1A8K

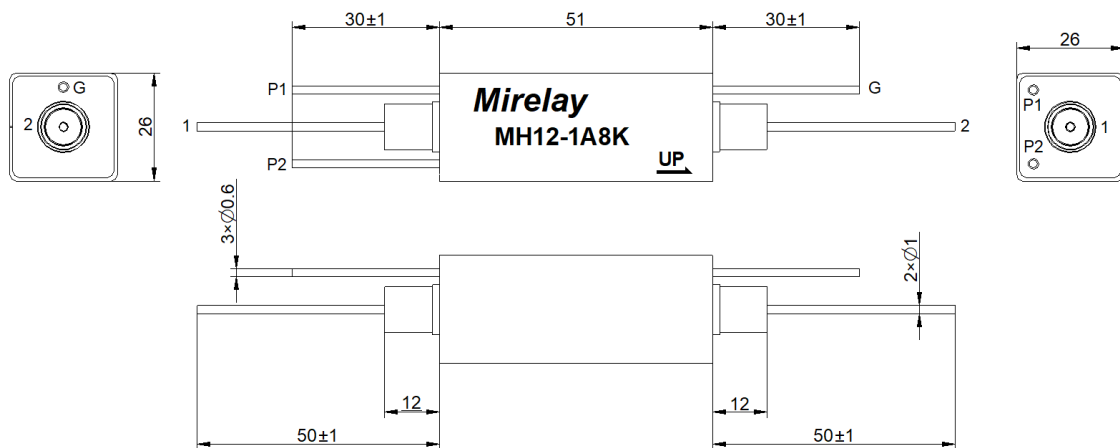
- High Power Mercury Reed Relay
- Low Contact Resistance
- High Carry Current
- Excellent Lifetime Characteristics
- Custom Design Available



[Outline Dimension]

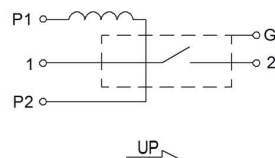
Unit: mm

Scale: 1/1



[Pin Layout]

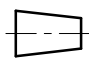

[Top View]



Order Information

MH12-1A8K

Coil Parameters		Relay Parameters	
1 Nominal coil voltage	12 VDC	1 Min Breakdown Voltage	8K VDC
2 Max Operating voltage	16 VDC	2 Dielectric Strength coil/contact	8K VDC
3 Max Pull-in voltage	9 VDC	3 Insulation Resistance coil/contact	1.00E+12ohm
4 Min Drop-out voltage	1.2 VDC	4 Operate Time, incl. Bounce	7.0ms
5 Coil Resistance	200 ohm	5 Reset Time	5.0ms
Contact Parameters		6 Capacitance Across Contacts	1.0pF
1 Contact Form	1 Form A	7 Storage Temperature	-35~+105°C
2 Max Contact Rating	100 W	8 Operating Temperature	-20~+70°C
3 Max Switch Voltage	5KV ACpeak/DC	9 Soldering Temperature	5 sec. max 260°C
4 Max Switch Current	5.0 A	Note	
5 Max Carrying Current	10.0 A	Hg wet contacts must be mounted within 30°	
6 Min Breakdown Voltage	8K VDC	of vertical plane.	
7 Max Contact Resistance	100 mohm		

Version: 01	Designed by		TITLE	 
	Checked by		High Voltage Reed Relay	
	Approved by		P/N	Scale: 1:1
	Date	31th,May,2022	MH12-1A8K	Page: 1/1