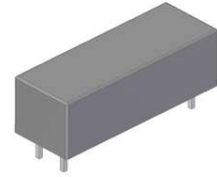


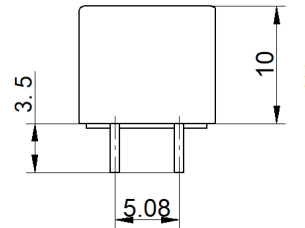
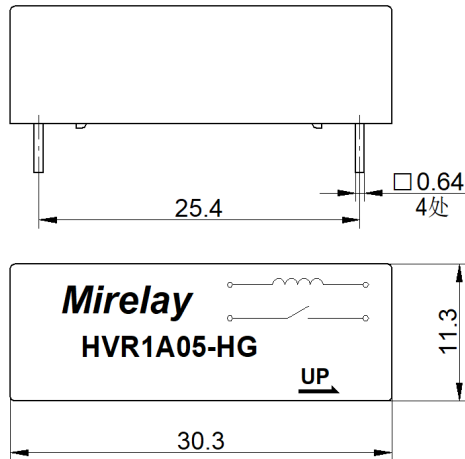
HVR1A05-HG

- High Power Mercury Reed Relay
- Low Contact Resistance
- High Carry Current
- Excellent Lifetime Characteristics
- Custom Design Available



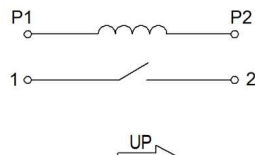
[Outline Dimension]

Unit: mm Scale: 1/1



[Pin Layout]

[Top View]



Order Information

HVR1A05-HG

| Coil Parameters | | Relay Parameters | |
|--------------------------|----------------|--|------------------|
| 1 Nominal coil voltage | 5 VDC | 1 Min Breakdown Voltage | 2K VDC |
| 2 Max Operating voltage | 7 VDC | 2 Dielectric Strength coil/contact | 2K VDC |
| 3 Max Pull-in voltage | 4 VDC | 3 Insulation Resistance coil/contact | 1.00E+12ohm |
| 4 Min Drop-out voltage | 0.5 VDC | 4 Operate Time, incl. Bounce | 2.0ms |
| 5 Coil Resistance | 100 ohm | 5 Reset Time | 2.0ms |
| Contact Parameters | | 6 Capacitance Across Contacts | 0.3pF |
| 1 Contact Form | 1 Form A | 7 Storage Temperature | -35~+105°C |
| 2 Max Contact Rating | 50 W | 8 Operating Temperature | -20~+70°C |
| 3 Max Switch Voltage | 1KV ACpeak/DC | 9 Soldering Temperature | 5 sec. max 260°C |
| 4 Max Switch Current | 1.0 A | Note | |
| 5 Max Carrying Current | 5.2 A(at 30°C) | Hg wet contacts must be mounted within 30° | |
| 6 Min Breakdown Voltage | 2K VDC | of vertical plane. | |
| 7 Max Contact Resistance | 80 mohm | | |

| | | | | |
|-------------|-------------|---------------|-------------------------|------------|
| Version: 01 | Designed by | | TITLE | |
| | Checked by | | High Voltage Reed Relay | |
| | Approved by | | P/N | Scale: 1:1 |
| | Date | 31th,May,2022 | HVR1A05-HG | Page: 1/1 |